



AdvancedReport Installation manual

Content:

1.	Introduction.....	3
2.	Revision	3
3.	System requirements	4
4.	Installation preparation	4
4.1	Necessary data.....	4
4.2	Trial version	4
5.	Installation.....	5
6.	Run Program as NT- Service	12
6.1	Installation.....	12
6.2	Installation with printer support.....	12
6.2.1	create a new lokal user:.....	13
6.2.2	Add printer to the local user.....	14
6.2.3	Change the settings for the service:	15
6.3	De-Installation Service.....	17
7.	De-installation Program	18
8.	Additional Options.....	18
9.	More Solutions.....	18

1. Introduction

The program AdvancedReport converts automatically data files and DX100/200 event files from the Yokogawa DX100/200, FX100, DX100P/200P and DXAdvanced recorders.

During configuration it is possible to select the format of the converted (exported) data file between ASCII [csv] or Microsoft-Excel¹. Additionally an Excel template file can be used.

When the standard export format MS-Excel is specified without using a template then it is not necessary to install MS-Excel on the PC.

The condition to use the above mentioned functions is the availability of the recorder files, the display data files² and/or the event files³ in a directory in the actual computer. By the automatic FTP function of the recorder this computer directory can be filled with the generated recorder data files. More information can be found in the instruction manual of the recorder.

2. Revision

Date	Version	Reason
21.11.2006	1	English version
13.06.2008	2	Update run as Service

¹ Excel; Windows is a trademark of the Microsoft Corporation

² Display data files, data files of a Yokogawa recorder

³ Display event files, data files of a Yokogawa Recorder

3. System requirements

The program AdvancedReport is Windows based and requires therefore a Windows operating system.

The program has been tested on the following platforms:

- Windows 2000 Professional SP4
- Windows XP Professional
- Windows XP Professional SP1
- Windows XP Professional SP2
- Windows XP Home.

When Excel templates are used during conversion, MS Excel is required.

The program has been tested with the following versions:

- Microsoft Excel 2000
- Microsoft Excel 2002
- Microsoft Excel 2003.

4. Installation preparation

4.1 Necessary data

For the installation of the program the file SetupAdvancedReport.exe, and a license number are required.

The license number will be given at the delivery of the package. Keep this information carefully!

The recorded data files should be available at the computer where the AdvancedReport program is installed. The best solution is to activate the FTP server function which is available in Windows XP and 2000. All Yokogawa recorders have an automatic FTP function which sent the data files to the FTP server, the data files then will be stored in a specified directory. This directory will be accessed by AdvancedReport program to perform the data conversion.

The procedure to activate the FTP server in Windows XP and an automatic FTP configuration example is explained in chapter 8.

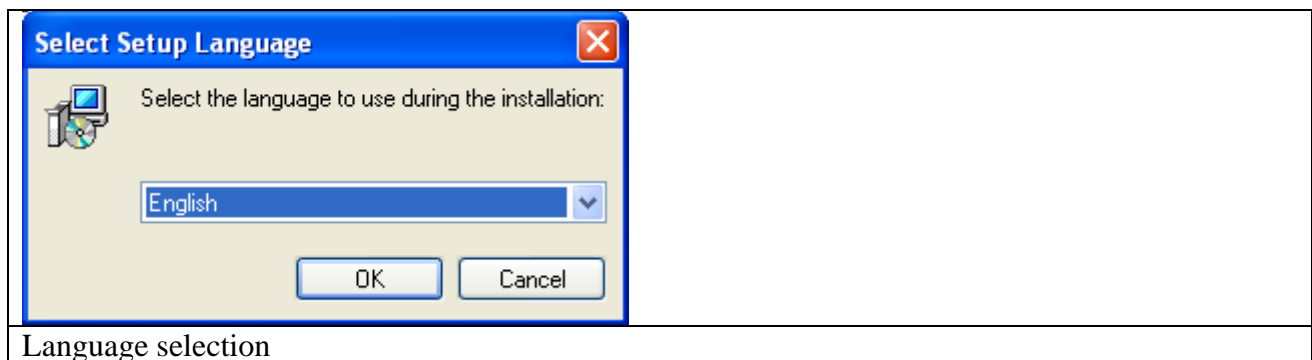
4.2 Trial version

For trial use enter the license number 000000000000-0000-000 (19 times zero).

All functions are available in the trial function as well. During the data conversion all fifth data points will be replaced by the word DEMO.

5. Installation

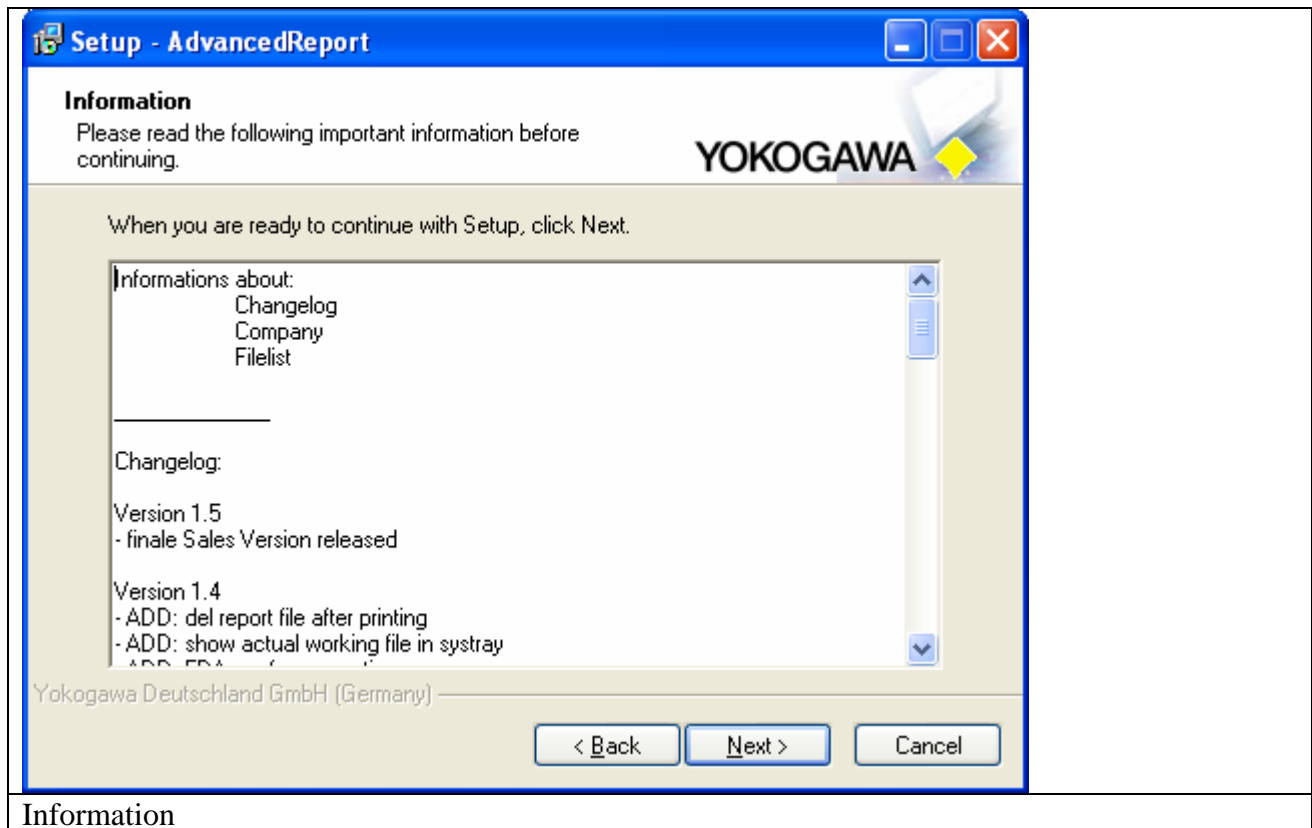
Execute the program SetupAdvancedReport.exe.
Then a window to select the language will appear.
Select “English” and confirm it with the “OK” button..



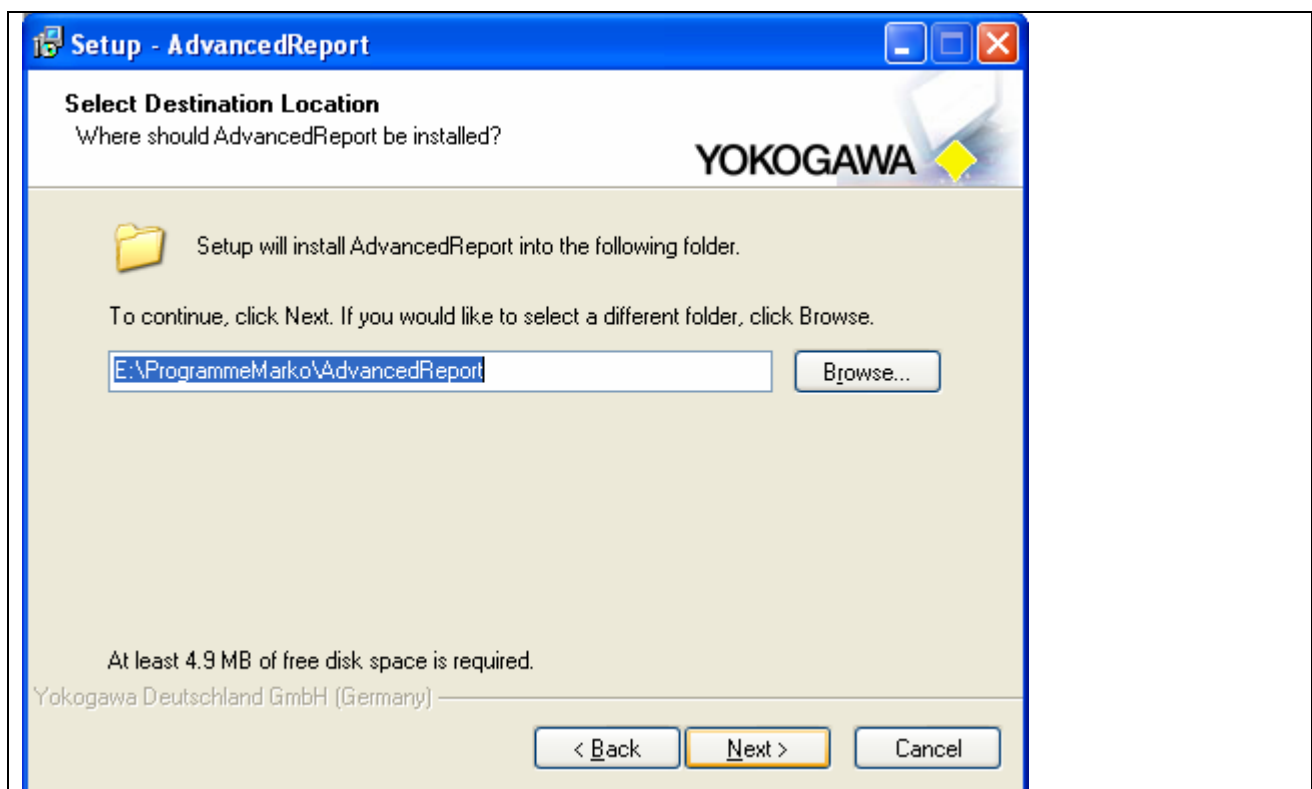
Confirm the welcome window with “Next”.



Read the information carefully and confirm it with the button “Next”.



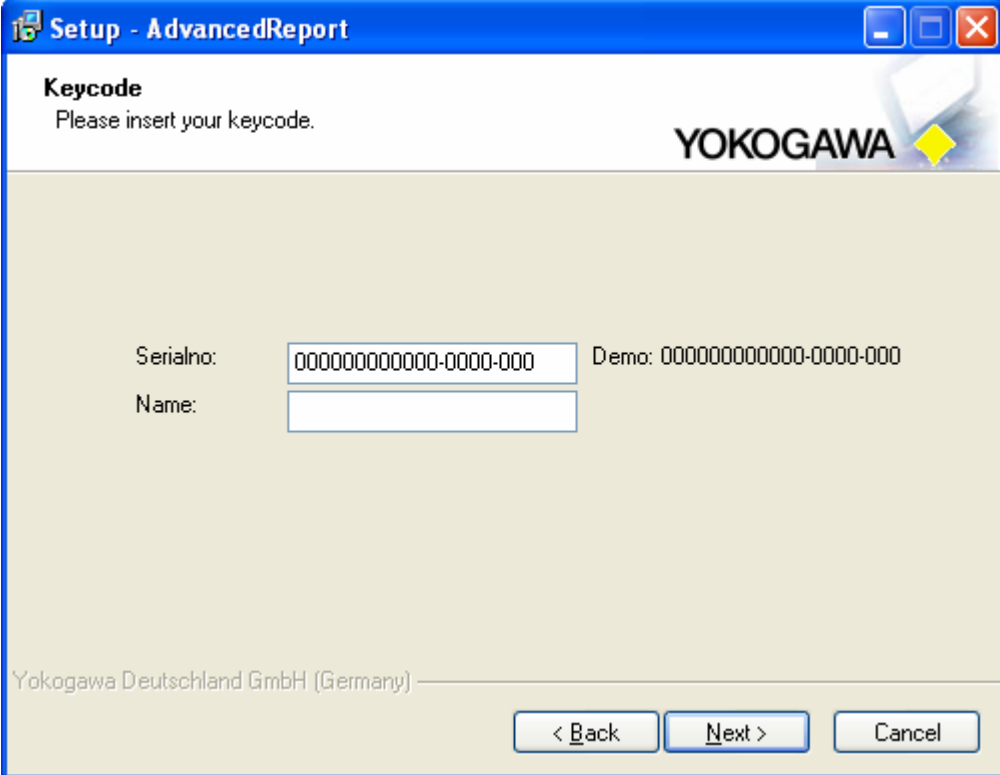
Select the destination location folder for the AdvancedReport program and conform it to the “Next” button.



Selection of destination folder

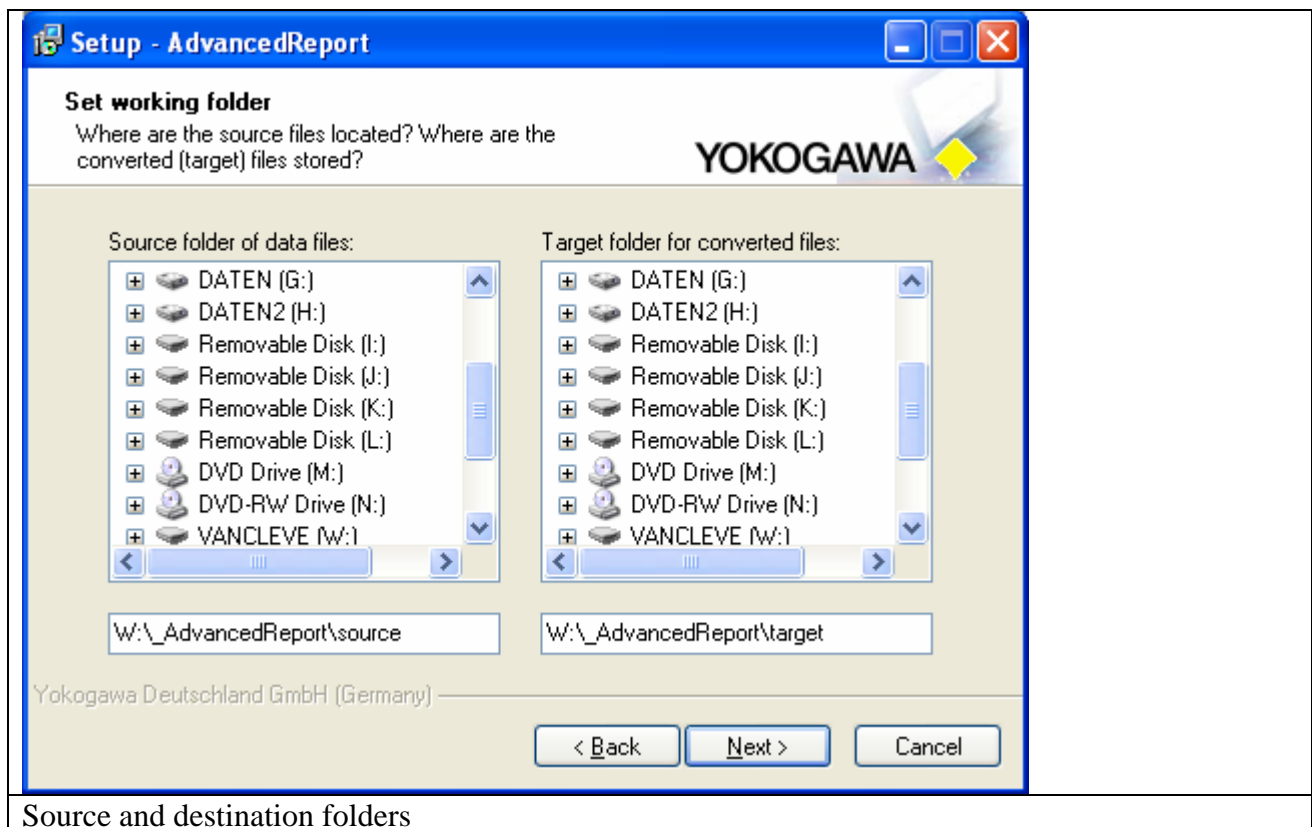
Then enter the keycode and name.

If the keycode is correct then the installation of the program will be activated with the button “Next”.

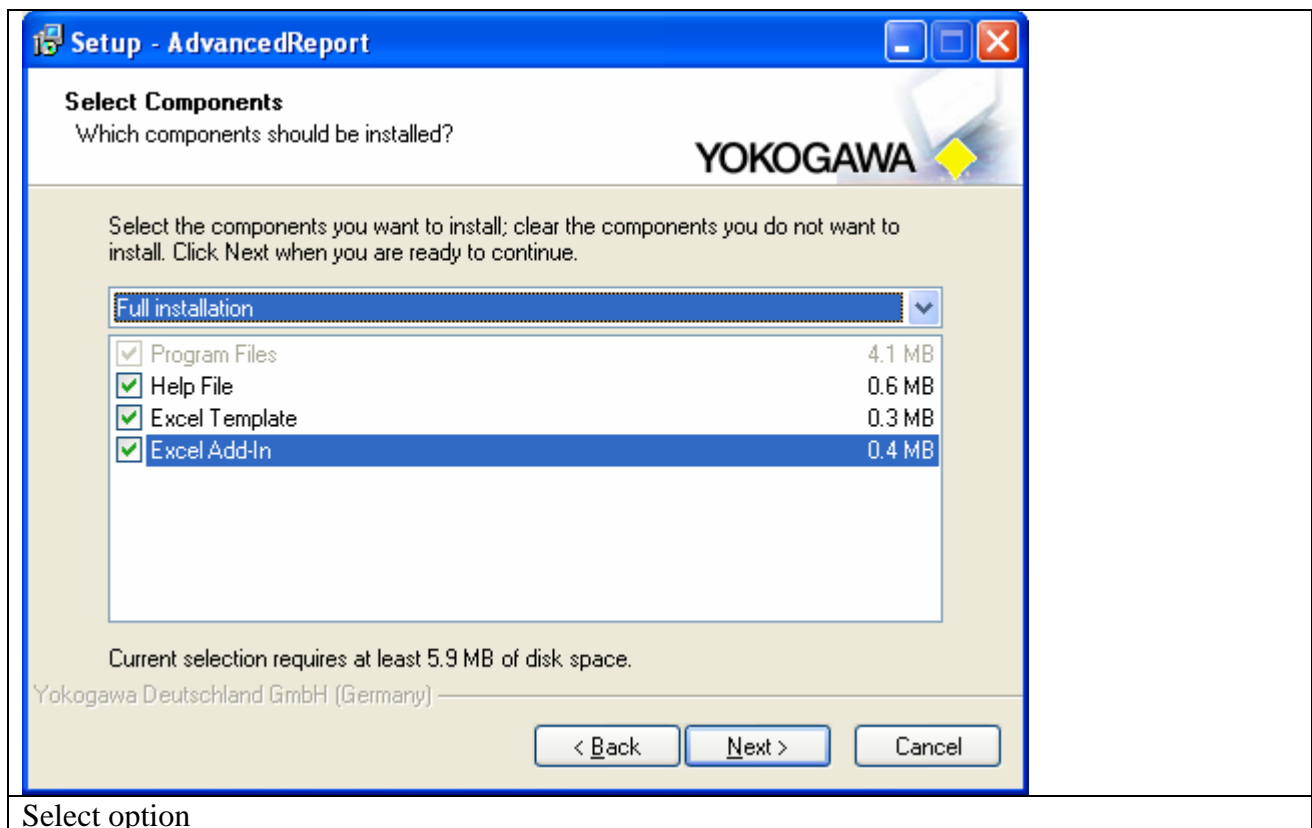


Registration

Both the source folder of the data files and the target folder of the converted files have to be defined in the window below. The source folder contains data files of the recorder. Define both folders and confirm the selection with the button “Next”.



Source and destination folders



Select option

Select the installation option and confirm the selection with the button “Next”. Use the full installation for the best result.

The screenshot shows a Windows-style setup window titled "Setup - AdvancedReport". The main heading is "Select Start Menu Folder" with the subtext "Where should Setup place the program's shortcuts?". The Yokogawa logo is in the top right. Below the heading, there is a folder icon and text stating: "Setup will create the program's shortcuts in the following Start Menu folder. To continue, click Next. If you would like to select a different folder, click Browse." A text box contains the name "AdvancedReport", and a "Browse..." button is to its right. At the bottom, there are three buttons: "< Back", "Next >", and "Cancel". The footer text reads "Yokogawa Deutschland GmbH (Germany)".

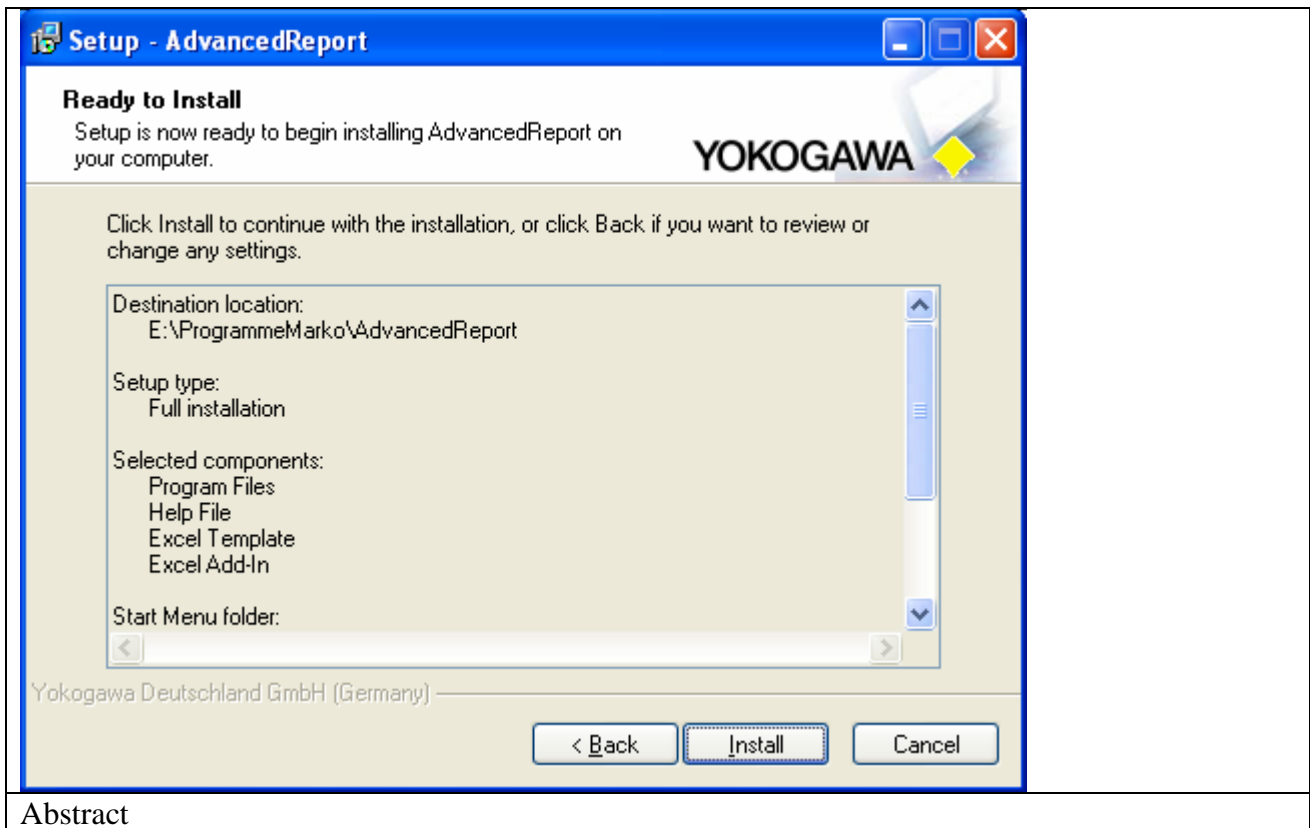
Startmenu name

Select the additional task shortcuts activation and confirm it with the “Next” button.

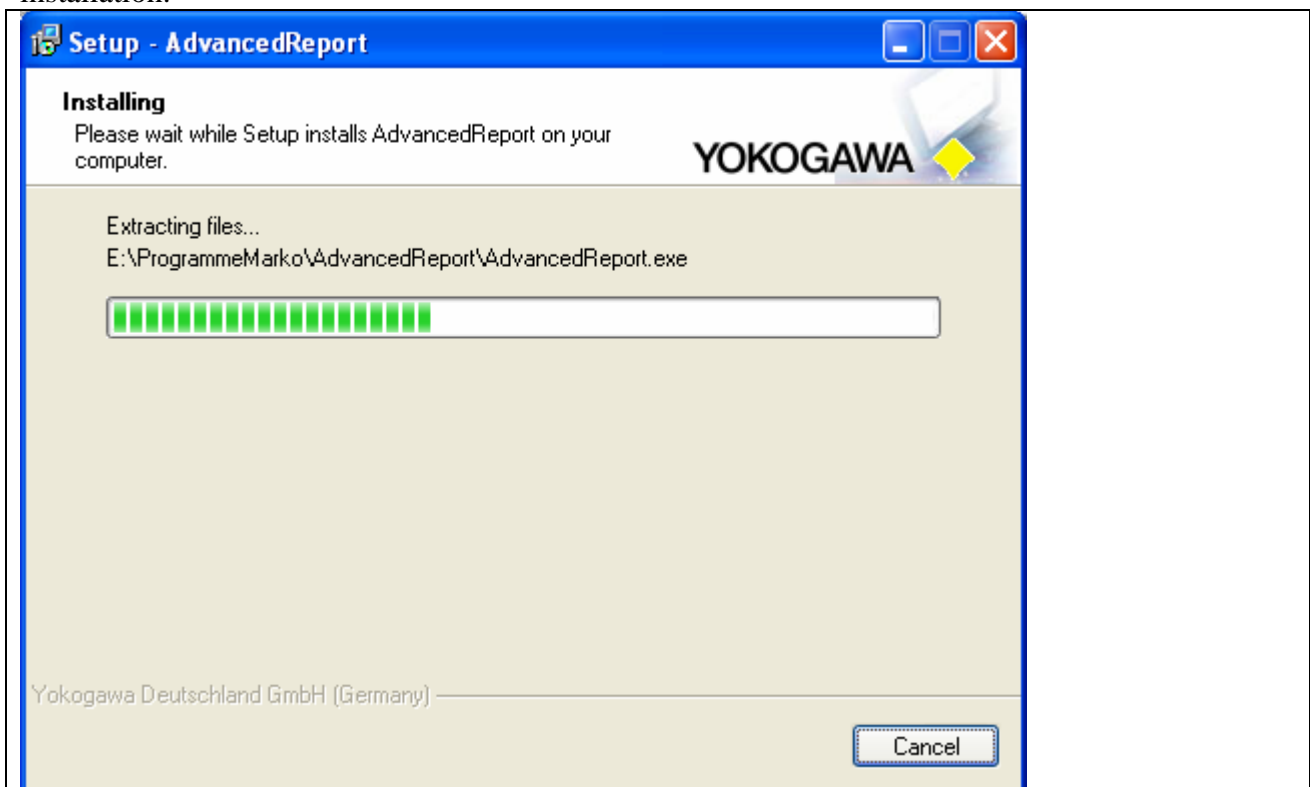
The screenshot shows the same setup window, now at the "Select Additional Tasks" step. The subtext is "Which additional tasks should be performed?". The Yokogawa logo is in the top right. Below the heading, there is text: "Select the additional tasks you would like Setup to perform while installing AdvancedReport, then click Next." Under the heading "Additional icons:", there are two checked checkboxes: "Create a desktop icon" and "Create a Quick Launch icon". At the bottom, there are three buttons: "< Back", "Next >", and "Cancel". The footer text reads "Yokogawa Deutschland GmbH (Germany)".

Addition task shortcuts

In the following abstract the listing of the selections made is displayed and can be confirmed by the button “Install”.

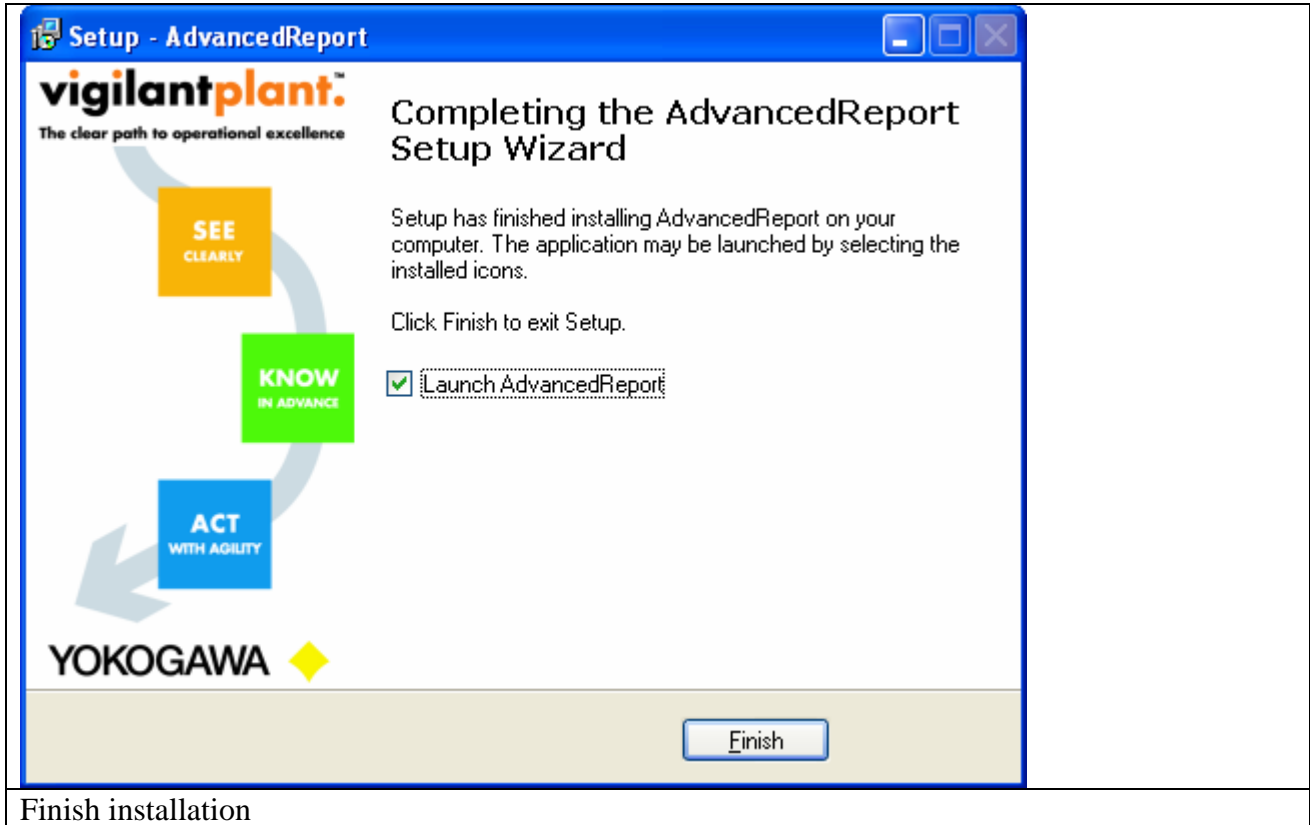


The installation of the program starts. With the “Abort” button it is possible to stop the installation.



Installation

After installation the button “Finish” have to be pressed.



Finish installation

The program can now be started from Start → Programs → AdvancedReport → AdvancedReport.

6. Run Program as NT- Service

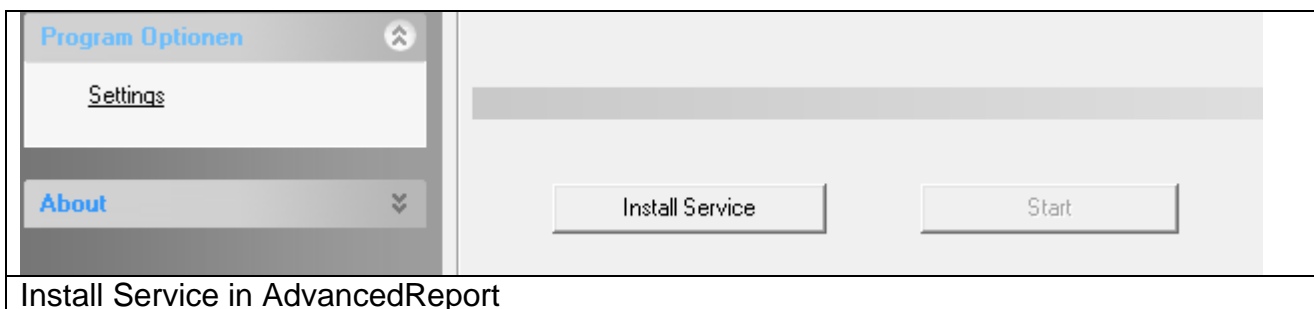
It is possible to start the program as a service. With this it is not necessary to login on the computer. It starts automatically with Windows.

Note:

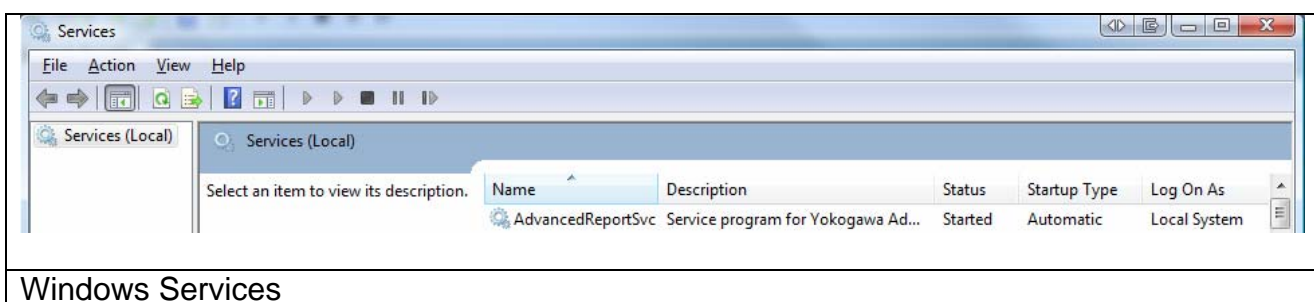
Also the FTP Server has to run as a Service!

6.1 Installation

Change to the Settings register. The Button „Install“ add the service „AdvancedReportSvc“ into the control panel. The Button „Start“ activate the Service. The service start as „System“ User in Automatic Mode. By changing the settings, it will be activate with a new folder scan.



The messages are send to the Windows event logger (Control Panel → Administrative Tools → Events).



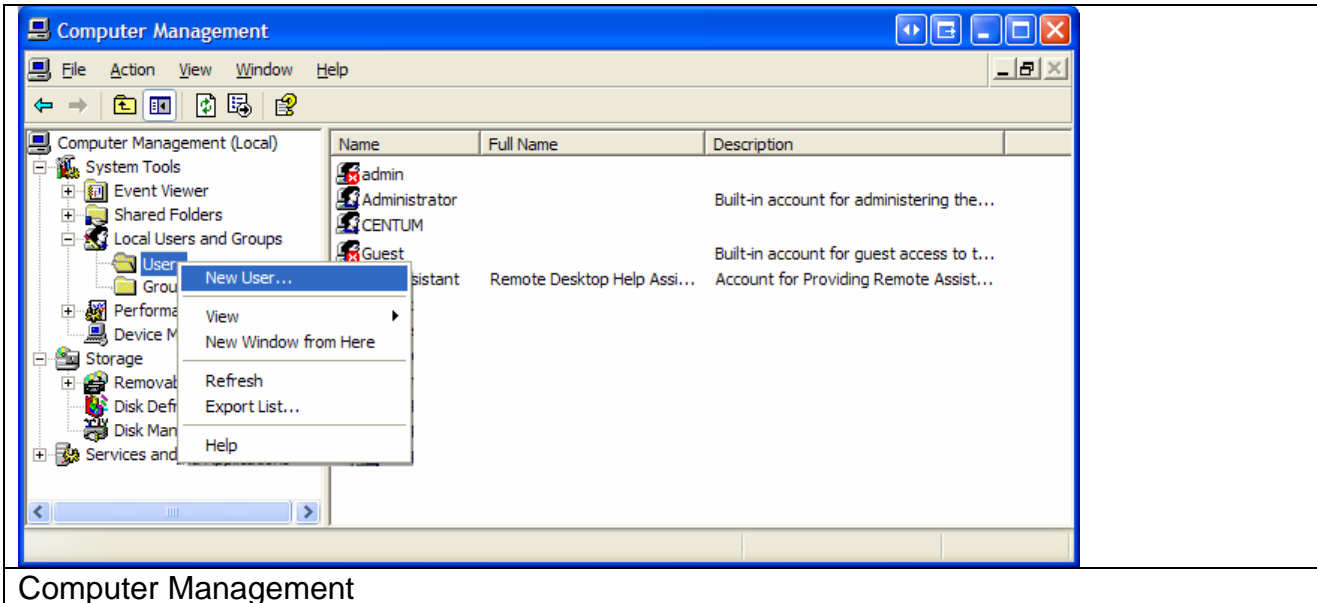
6.2 Installation with printer support

Start the program RunAsService.cmd to install the Service.

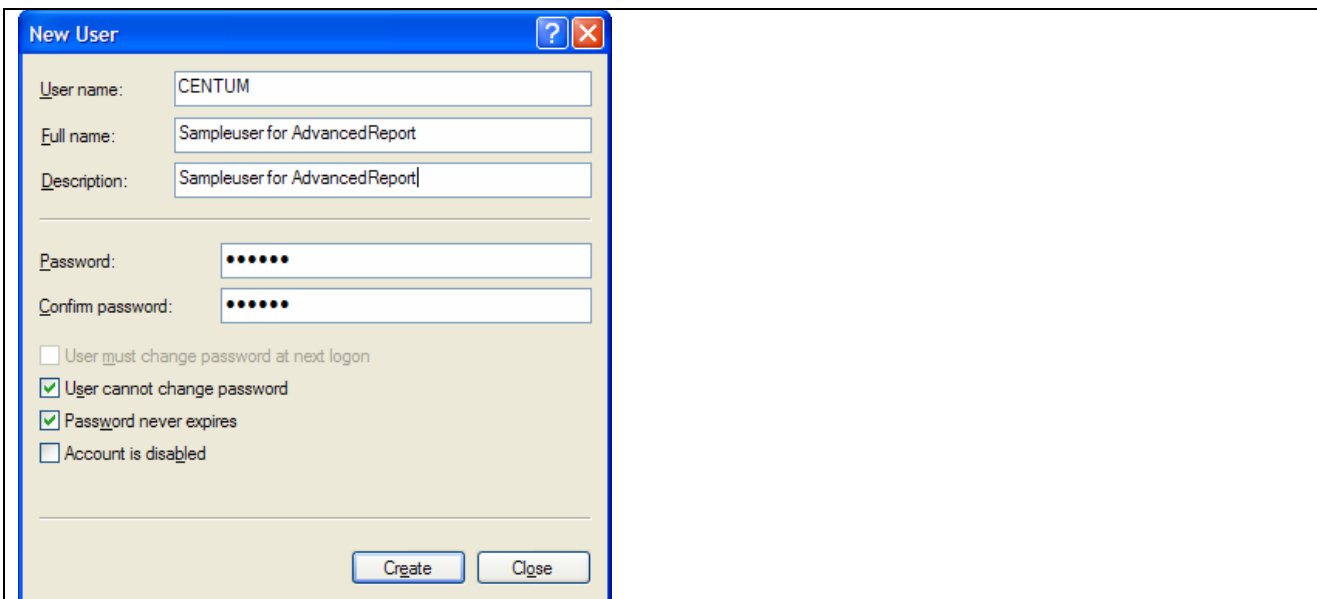
If you want to print the report on paper, please follow the next steps:

6.2.1 create a new lokal user:

control panel → Administrative tools → Computer Management
Local user and groups → user

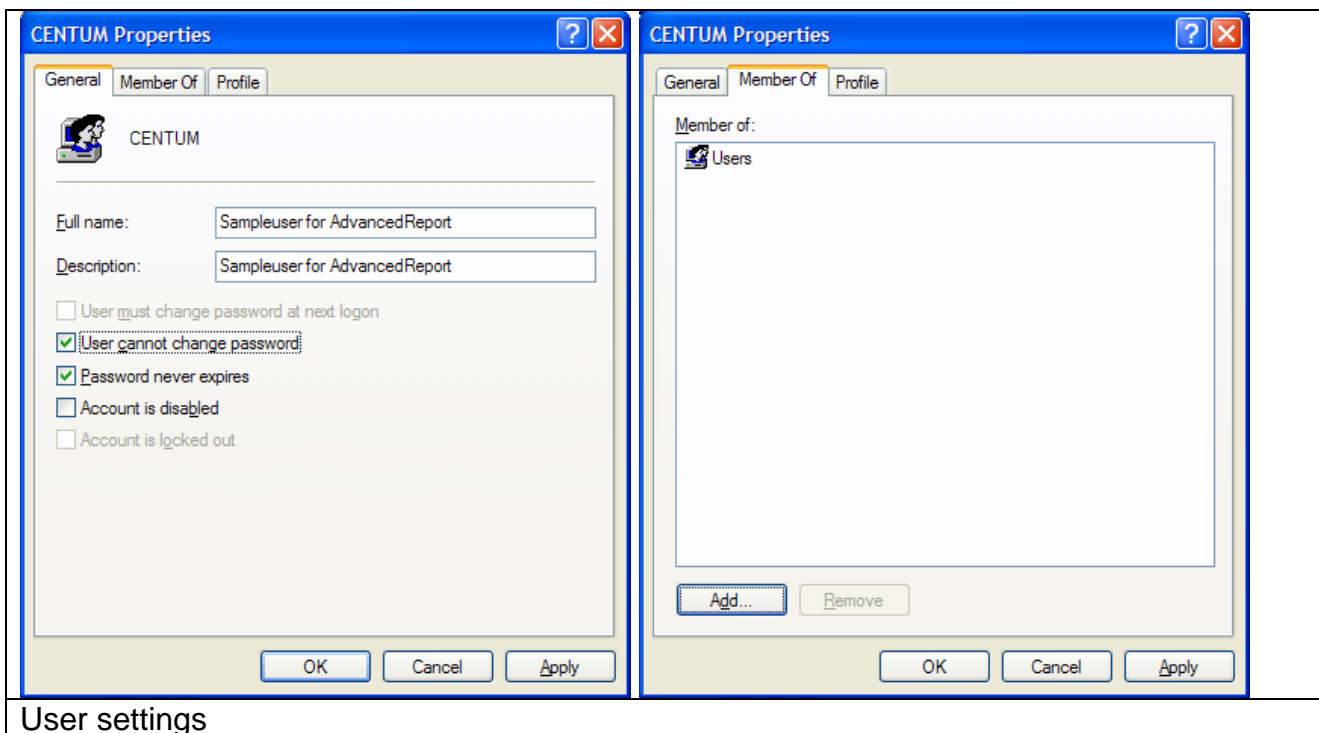


Computer Management



Create a new user

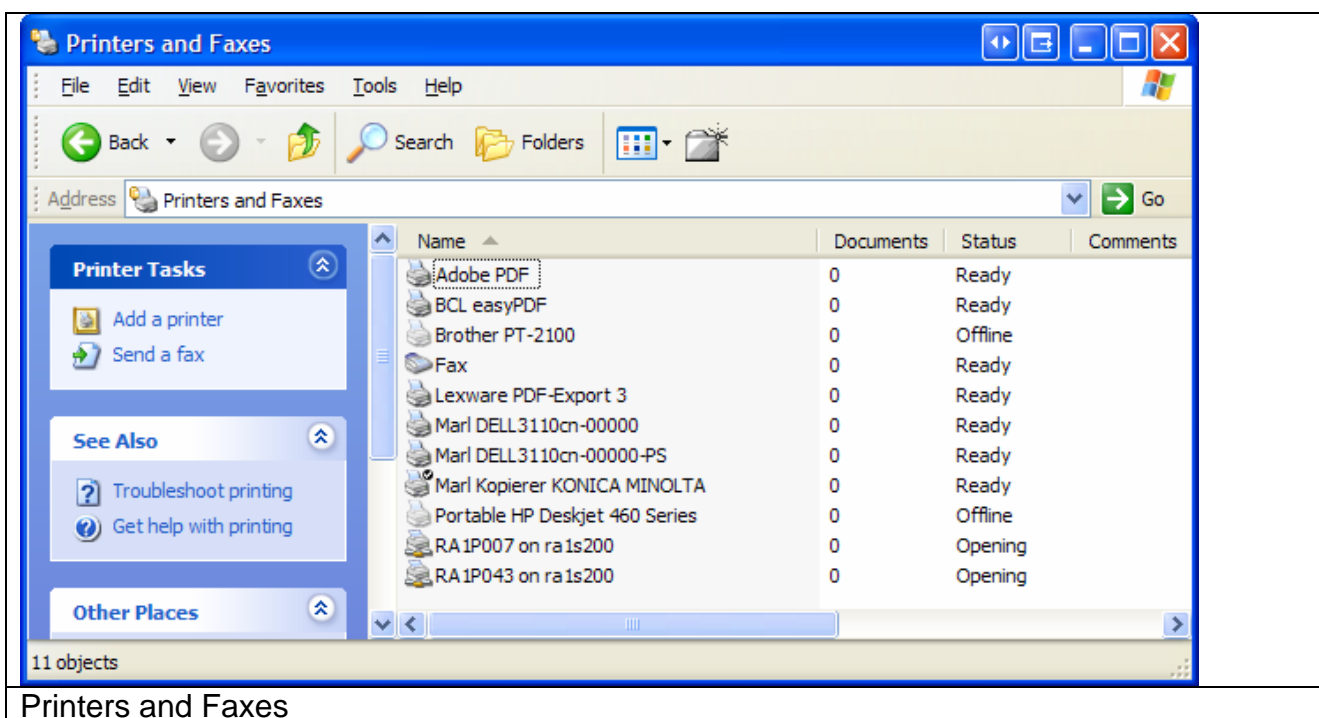
You have to set a password!



6.2.2 Add printer to the local user

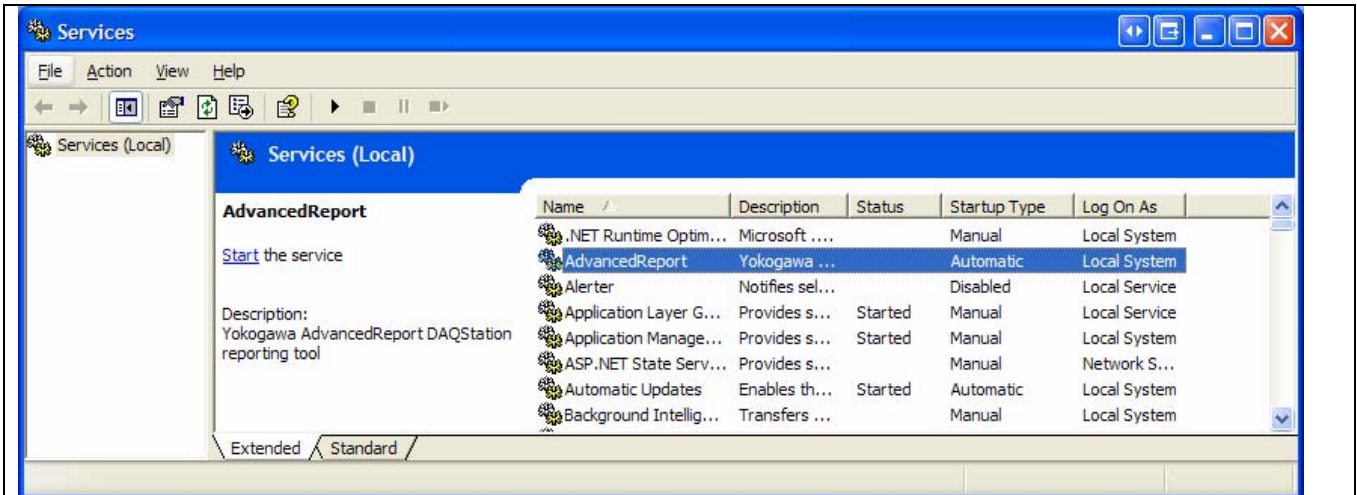
Login as new local user.

Add a printer to the user account. Ask your Administrator for more details.

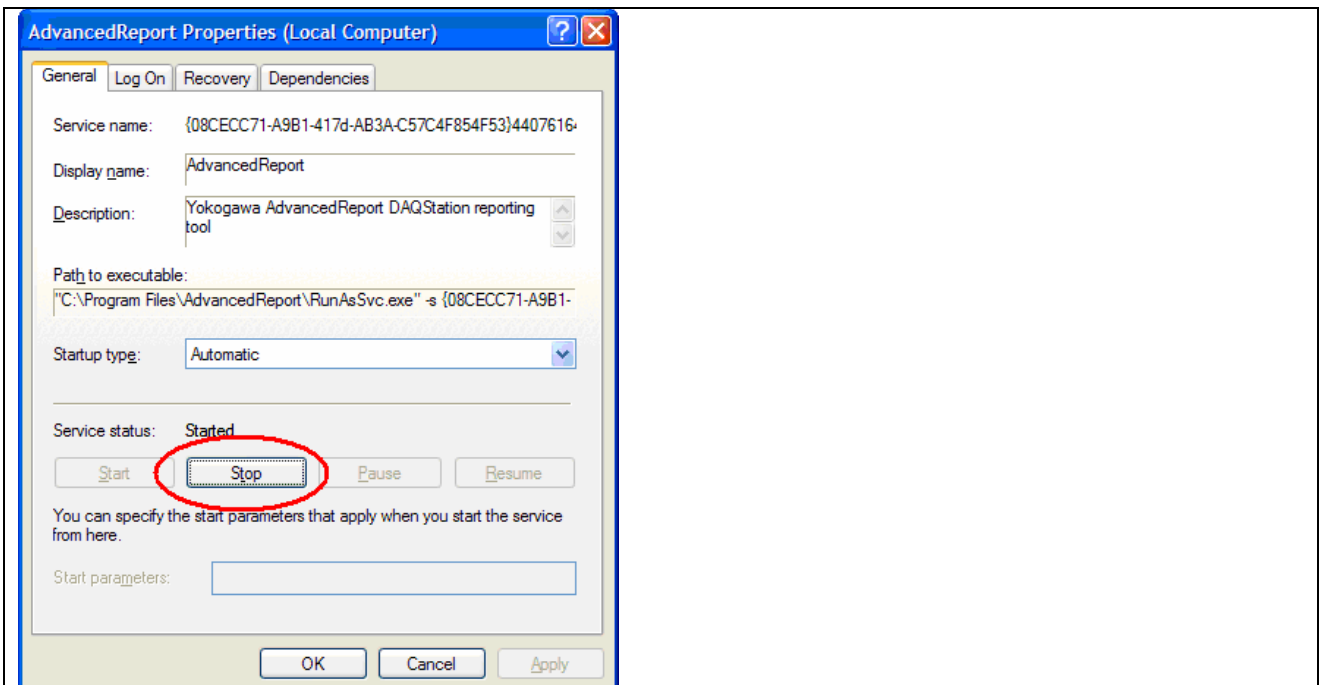


6.2.3 Change the settings for the service:

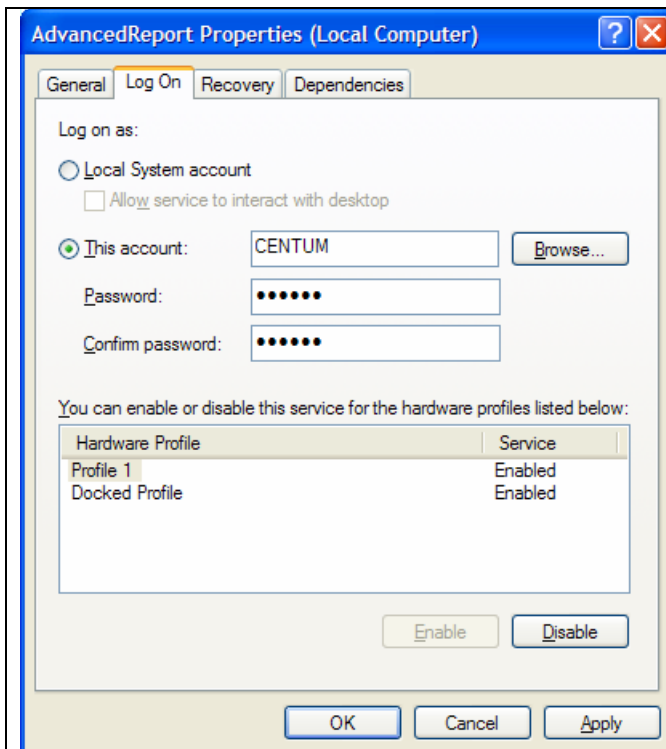
Control Panel → Administrative tools → Services



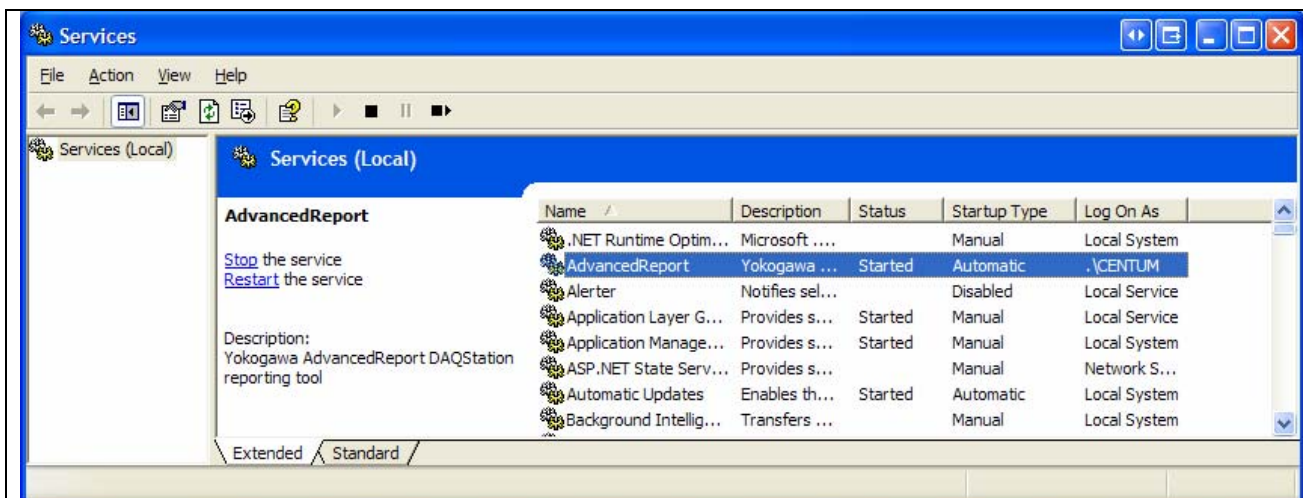
Service run with local system account



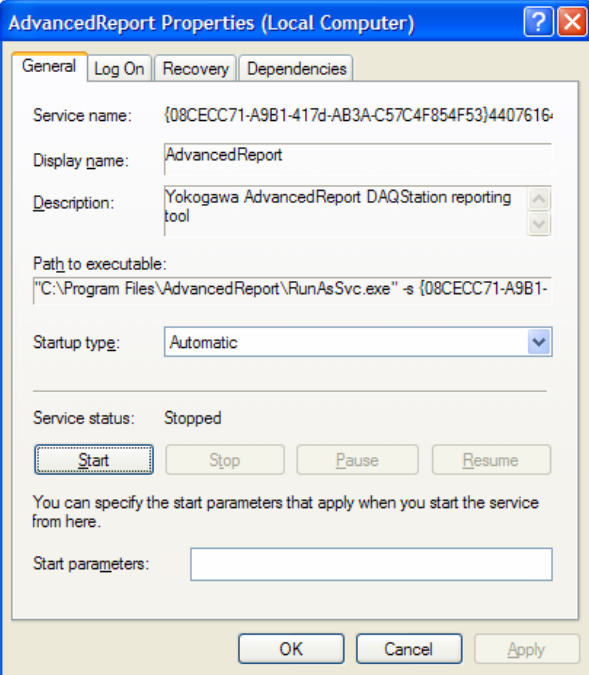
Stop the service



Change from System-account to local user account



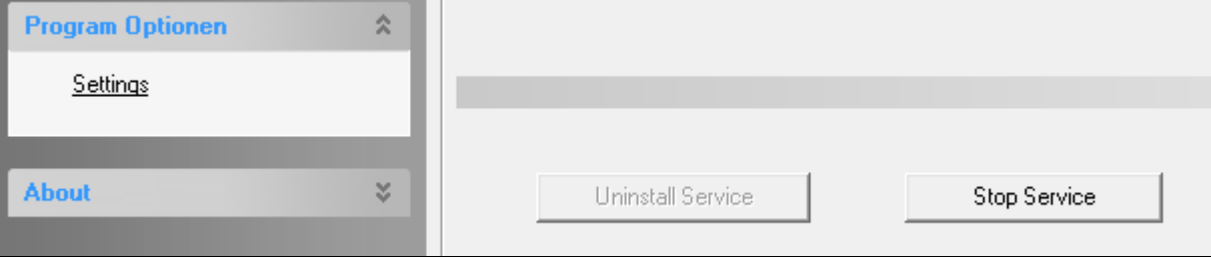
Service run with local user account



Restart the service

6.3 De-Installation Service

Change to the Settings register. The Button „Stop“ stopped the service. After stopping the service it is possible to deinstall the servie by using the button „Un-Install“.



Stopp and Deinstall

7. De-installation Program

The de-installation can be done by the uninstall-routine of Windows. To be found under Start → Settings → Control panel → Software.

8. Additional Options

The program AdvancedReport does not need an entry in the registry of Windows. All settings are stored into the file AdvancedReport.ini. Only the function „Start with Windows“ will be defined an entry into the registry when this is activated.

The Dll-files do not need a registration.

It is possible to move the program or to start as batch program. All the files should then be in the same folder.

9. More Solutions

Also available are the following software products:

- **AdvancedSQL**
 - The program AdvancedSQL inserts automatically data from the Yokogawa paperless recorders into any database.
- **TUSReport - Addin for Microsoft Excel**
 - The program TUSReport serves automatic converting of the data files and the event files of the Yokogawa recorder from the DX, DXP, FX and DXAdvanced family into the NADCAP Report format.