

# AQ2211/AQ2212

## Frame Controller



AQ2211  
Frame controller  
(3-slot)



AQ2212  
Frame controller  
(9-slot)

## High-Performance Controllers Increase Work Efficiency

- **Module & remote command compatible**  
The existing AQ2200 modules and remote commands can be used without change.
- **Various communication interfaces**  
GP-IB, Ethernet, and USB port  
Easy control with PC

- **Quick response in remote control**  
⇒ Improving the production efficiency
- **Multi User Function**  
⇒ Effective for saving space and costs
- **Macro Programming Function**  
(Under development)  
⇒ Easy way to build auto-measurement systems
- **Remote Viewer Software**  
⇒ Remote monitoring and controlling frames and modules

[www.tmi.yokogawa.com/tm](http://www.tmi.yokogawa.com/tm)  
Test & Measurement Instruments

# AQ2211 / AQ2212 Frame Controller

## Features

### Quick response in remote control

- Fast remote command processing
- Fast LAN: 100BASE-TX compatible

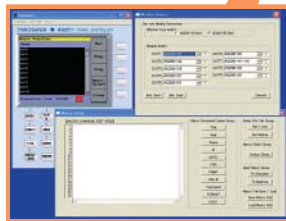
### Macro Programming Function (Under development)

- Easy way to build auto-measurement systems, not requiring an external PC to run.
- Easy programming with Macro creator, PC application software.

#### STEP 1

Create MACRO for an application on AQ2200 Macro creator.

Macro creator

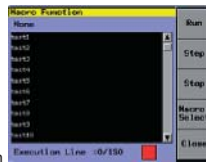


#### STEP 2

Install MACRO to Frame controller.

#### STEP 3

Execute MACRO, and save test data



AQ2211/12 screen

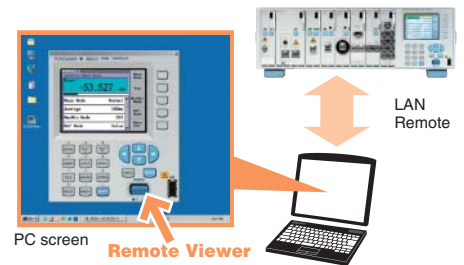
### Multi User Function

- Up to 5 users can access to a frame controller simultaneously.
- Possible to control individual modules.



### Remote Viewer Software

- Displays the frame controller screen on PC.
- Controls the frame as if operating on the real frame.



PC screen

Remote Viewer

LAN Remote

## Specification

Items		Specifications	
Model		AQ2211	AQ2212
Number of slots		3	9
Display Color LCD, 320×240 dot			
Remote interface	GPIB	IEEE-488 compatible, protocol: IEEE-488.2 compatible	
	Ethernet	IEEE802.3 compatible, connector: RJ-45×1, transmission method: Ethernet(100BASE-TX), protocol: TCP/IP	
	USB	USB Rev1.1 compatible, connector: USB type B×1, protocol: USB-TMC	
External storage interface		USB (USB Rev2.0 compatible, connector: USB type A×1, applicable device: USB mass storage class flash memory)	
Interlock connector		BNC connector	
Functions	Preset applications	Stability, Logging, Swept, Optical return loss(ORL), Bit error rate(BER)	
	Control functions	Macro programming, Multi-user, Remote viewer support	
Power requirement		100 to 240Vac, 50/60Hz	
Power Consumption		170VA (including modules)	540VA (including modules)
Dimension		Approx. 212(W)×132.5(H)×400(D)mm	Approx. 425(W)×132.5(H)×500(D)mm
Mass		Approx. 6kg	Approx. 11kg

Note Please refer to GS810518900 for details.  
Macro programming is under development.

"Ethernet is a registered trademark of Xerox Corporation."

## Ordering information

### AQ2211 Frame Controller

Model	Suffix	Specifications
735101	-	-
Power cord	-D	UL/CSA standard
	-F	VDE standard
	-R	AS standard
	-Q	BS standard
	-H	GB standard

### AQ2212 Frame Controller

Model	Suffix	Specifications
735102	-	-
Power cord	-D	UL/CSA standard
	-F	VDE standard
	-R	AS standard
	-Q	BS standard
	-H	GB standard

# YOKOGAWA

YOKOGAWA ELECTRIC CORPORATION  
Measurement Business Headquarters /Phone: (81)-422-52-6768, Fax: (81)-422-52-6624  
E-mail: tm@cs.jp.yokogawa.com

YOKOGAWA CORPORATION OF AMERICA Phone: (1)-770-253-7000, Fax: (1)-770-251-6427  
YOKOGAWA EUROPE B.V. Phone: (31)-88-4641000, Fax: (31)-88-4641111  
YOKOGAWA ENGINEERING ASIA PTE. LTD. Phone: (65)-62419933, Fax: (65)-62412606

Subject to change without notice.  
[Ed : 02/b] Copyright ©2009  
Printed in Japan, 002(KP)